


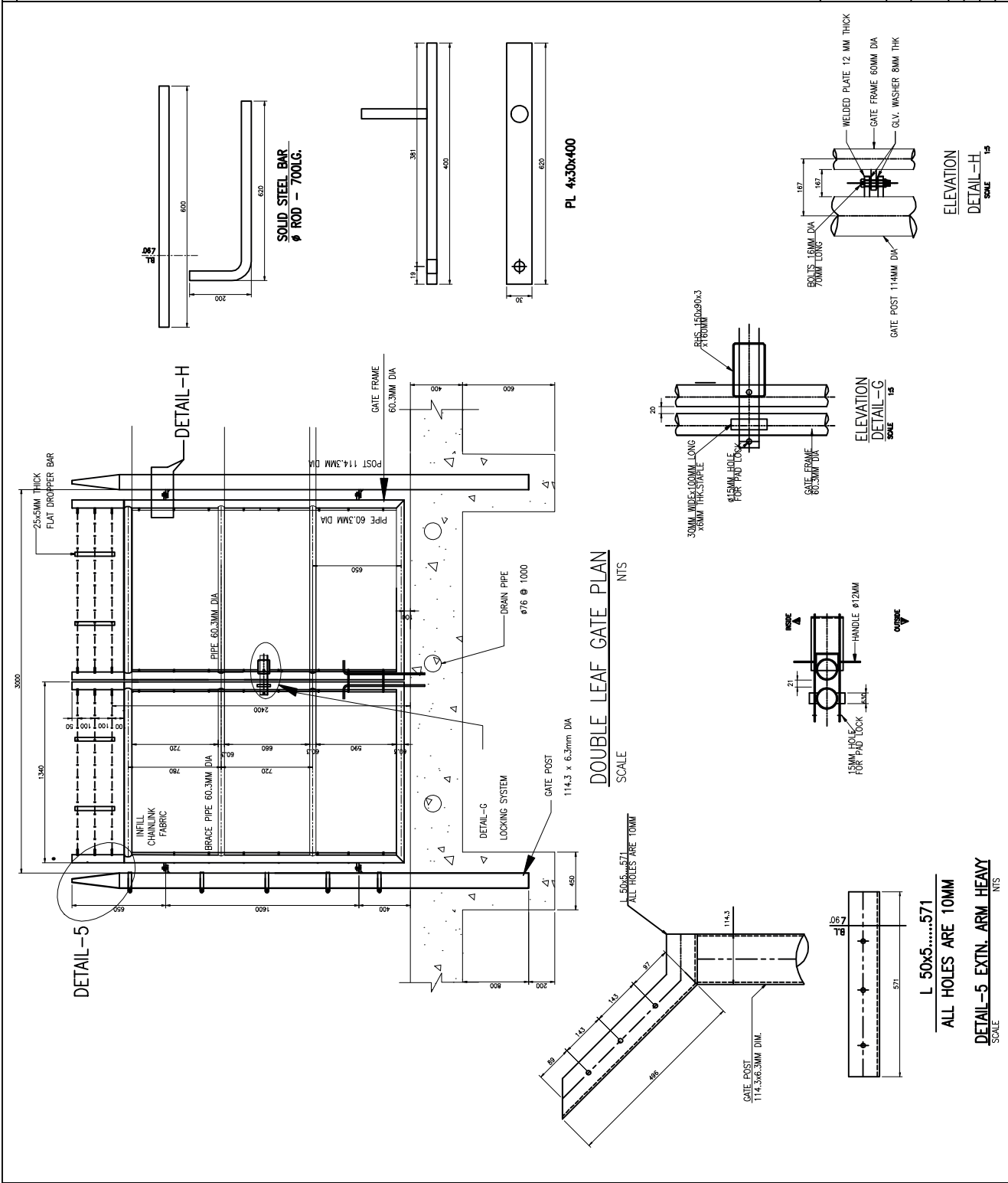
- NOTES**
1. ALL DIMENSIONS ARE IN MILLIMETERS UNLESS OTHERWISE NOTED.
 2. GATE POST AND PIPES ARE COMPLYING WITH ASTM A-53 CH 40 & GALVANIZED TO 65 MICRONS.
 3. CHAINLINK FABRICS, TENSION, STIRRUP AND TEL WIRE ARE GALVANIZED AND PVC COATED, COLOR DARK GREEN.
 4. THE FENCE SHOULD BE CONSTRUCTED 100% AS PER DETAILS IN THE DRAWING WITHOUT ANY DEVIATION.
 5. GATES ARE TO BE OFF WELDED CONSTRUCTION.
 6. MINIMUM COMPRESSIVE STRENGTH OF ALL CONCRETE (USED TYPE V SULPHATE RES. CEMENT) REQUIRED FOR FENCE WORK SHALL BE 30N/50MM (28DAYS), THE CONCRETE IN DIRECT CONTACT WITH SOIL SHALL BE PAINTED WITH 2 COAT OF BITUMIN PAINT.
 7. TREATMENT AT POINT WHERE POST ENTERS CONCRETE.
 - a) APPLY A COAT OF BITUMINOUS PAINT.
 - b) WRAP WITH ONE SHEET OF FELT.
 - c) APPLY FINAL COAT OF BITUMINOUS PAINT.
 - d) TREATMENT TO EXTEND 25MM ABOVE THE CONCRETE AND BELOW CONCRETE TOP SURFACE.
 8. ALL PIPES, GATE POST, LINE POST, CORNER POST AND FIXING ACCESSORIES ARE SOLVENT CLEANED WITH MORDED SOLUTION BEFORE THE PAINTING APPLICATION, THE COLOR OF PAINT IS DARK GREEN, THE PROCESS IS AS FOLLOWS.
 - a) CLEANING AND REMOVING GREASE OR DIRT.
 - b) APPLYING ONE COAT OF APPROVED WASH COAT
 - c) APPLYING EPOXY UNDERCOAT # INTERMEDIATE # BUILD AND FINISH COAT IN 3 COATS (TOTAL THICKNESS 200-250 MICRON)
 9. AFTER BACKFILLING THE ABOVE GROUND CONCRETE SURFACES SHALL BE PAINTED WITH DECAURD COMPOUND, PROVIDED UPON PAT.
 10. SUPPLIER/FABRICATOR COMPLIANCE CERTIFICATE SHALL BE PROVIDED UPON PAT.
 11. SUPPLIER LOGO SHALL BE DISPATCH WITH EACH PLOT AT SITE.

MANUFACTURER:



H-Tech Fence & Steel Industries
 0555015794, 0555015795 RYADH
 TEL: 2064979

TITLE: GATE ELEVATION AND DETAILS	
DESIGN: MOZ	SCALE: AS SHOWN
DRAWN: ZAKI	DATE: 10/10/13
CHECKED:	DRG. NO. :
APPROVED: JVD	GEN-HITECH-GATE-001



L 50x5.....571
 ALL HOLES ARE 10MM
 DETAIL-5 EXTN. ARM HEAVY
 SCALE

ELEVATION
 DETAIL-H
 SCALE 1:5

ELEVATION
 DETAIL-G
 SCALE 1:5

DOUBLE LEAF GATE PLAN
 SCALE
 NTS